

2025 JOINT ENGINEER TRAINING CONFERENCE & EXPO

MAY 13-15
Louisville, KY

IGNITING IDEAS!



samejetc.org



2025 JOINT ENGINEER TRAINING
CONFERENCE & EXPO IGNITING IDEAS!

MAY 13-15
Louisville, KY

Warfighter Seminar 2025:

Pacific Humanitarian Assistance / Disaster Response Tabletop Exercise Introduction

April 29, 2025, 3:00 PM EDT

[SAMEJETC.ORG](https://samejetc.org)

[f @SAMENATIONAL](https://www.facebook.com/SAMENATIONAL)

[X @SAME_NATIONAL](https://x.com/SAME_NATIONAL)

[in "SOCIETY OF AMERICAN MILITARY ENGINEERS"](https://www.linkedin.com/company/society-of-american-military-engineers)

Warfighter Seminar: Pacific HADR TTX

Moderator: Col. Matthew Beverly, USAF (Ret.), AECOM

Speakers/Facilitators:

- DSCA/FHA: CPT Ben Howard, Project Manager, USACE, USA
- American Samoa: Capt Brett Betit, Instructor, AFIT CE School, USAF
- Samoa: LT Dylan Elkins, Plans & Strategies, NCG 1, USN



2025 JOINT ENGINEER TRAINING
CONFERENCE & EXPO IGNITING IDEAS!

MAY 13-15
Louisville, KY

[SAMEJETC.ORG](https://samejetc.org)

 @SAMENATIONAL

 @SAME_NATIONAL

 "SOCIETY OF AMERICAN MILITARY ENGINEERS"



2025 JOINT
ENGINEER
TRAINING
CONFERENCE
& EXPO

IGNITING IDEAS!

MAY 13-15
Louisville, KY

samejetc.org



AGENDA

Admin Info

DSCA

FHA

TTX Scenario

American Samoa

Samoa

SAMEJetc.org

 [@SAMENATIONAL](https://www.facebook.com/SAMENATIONAL)

 [@SAME_NATIONAL](https://twitter.com/SAME_NATIONAL)

 ["SOCIETY OF AMERICAN MILITARY ENGINEERS"](https://www.linkedin.com/company/society-of-american-military-engineers)

HOUSEKEEPING ITEMS

Ensure you are Muted

Please turn your camera off unless presenting or asking a question to preserve bandwidth

Presentations and Audio Recordings will be available in the Attendee Service Center until September 1, 2025

Download your PDH record in the Attendee Service Center before September 1, 2025



2025 JOINT ENGINEER TRAINING
CONFERENCE & EXPO
IGNITING IDEAS!

MAY 13-15
Louisville, KY

[SAMEJETC.ORG](https://samejetc.org)

 @SAMENATIONAL

 @SAME_NATIONAL

 "SOCIETY OF AMERICAN MILITARY ENGINEERS"

DSCA

SAMEJTC.ORG

 [@SAMENATIONAL](https://www.facebook.com/SAMENATIONAL)

 [@SAME_NATIONAL](https://twitter.com/SAME_NATIONAL)

 ["SOCIETY OF AMERICAN MILITARY ENGINEERS"](https://www.linkedin.com/company/society-of-american-military-engineers/)

What is Defense Support to Civil Authorities (DSCA)

*Support provided by U.S. Federal military forces, DoD civilians, DoD contract personnel, DoD Component assets, and National Guard forces (when the Secretary of Defense, in coordination with the Governors of the affected States, elects and requests to use those forces in Title 32, U.S.C., status) in response to requests for assistance from civil authorities for **domestic** emergencies, law enforcement support, and other **domestic** activities, or from qualifying entities for special events.*



2025 JOINT ENGINEER TRAINING
CONFERENCE & EXPO IGNITING IDEAS!

MAY 13-15
Louisville, KY

[SAMEJETC.ORG](https://samejetc.org)

[f @SAMENATIONAL](https://www.facebook.com/SAMENATIONAL)

[X @SAME_NATIONAL](https://x.com/SAME_NATIONAL)

[in "SOCIETY OF AMERICAN MILITARY ENGINEERS"](https://www.societyofamericanmilitaryengineers.org)

Executing DSCA

- **Hurricanes**
- Typhoon
- **Wildfires**
- Volcanic Eruption
- Landslide
- Earthquake
- Flood
- **Tsunami/Tidal Wave**
- Meteor Impact
- Tornado
- Snowstorm
- Drought

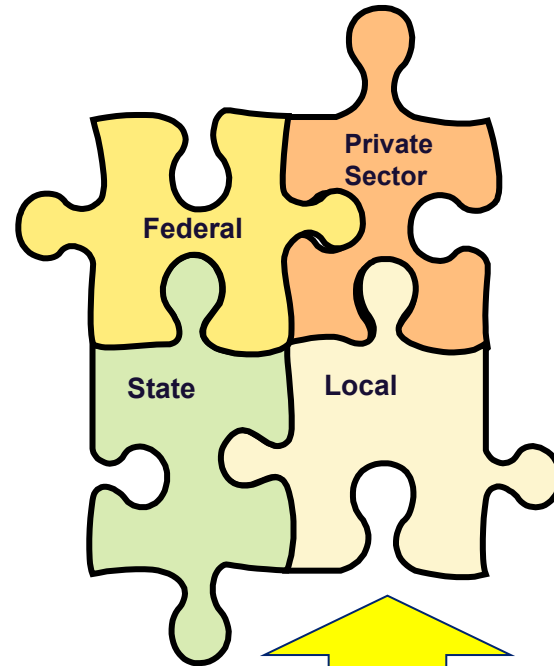
- Chemical Incident
- Biological Incident
- Radiological Incident
- Explosion
- Oil Spill
- Space Debris Impact
- **Pandemic / Epidemic**
- Animal Disease
- Postal Work Stoppage
- Insurrection
- Civil Disturbance
- Mass Immigration

- Counter Terrorism
- Significant Cyber Incidents
- CBRN Incidents
- Laboratory Support
- Medical Support
- Special Events
- Civil Works Projects
- **ISO Border Security**
- Critical Infrastructure Protection
- Continuity of Operations
- Mutual Aid

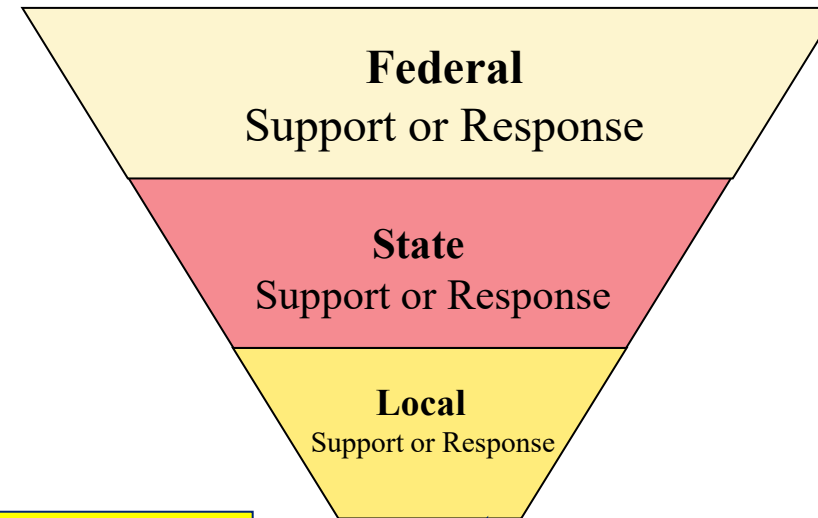


Executing DSCA

Whole Community



National Incident Management System (NIMS)
Standardized process and procedures for incident management



National Response Framework (NRF)
A guide to how the Nation responds to all types of disasters and emergencies built on scalable, flexible and adaptable concepts through Unity of Effort and readiness to act



Incident Commander:
County EMS Chief
Mayor
Police Chief
Fire Chief



2025 JOINT ENGINEER TRAINING
CONFERENCE & EXPO
IGNITING IDEAS!

MAY 13-15
Louisville, KY

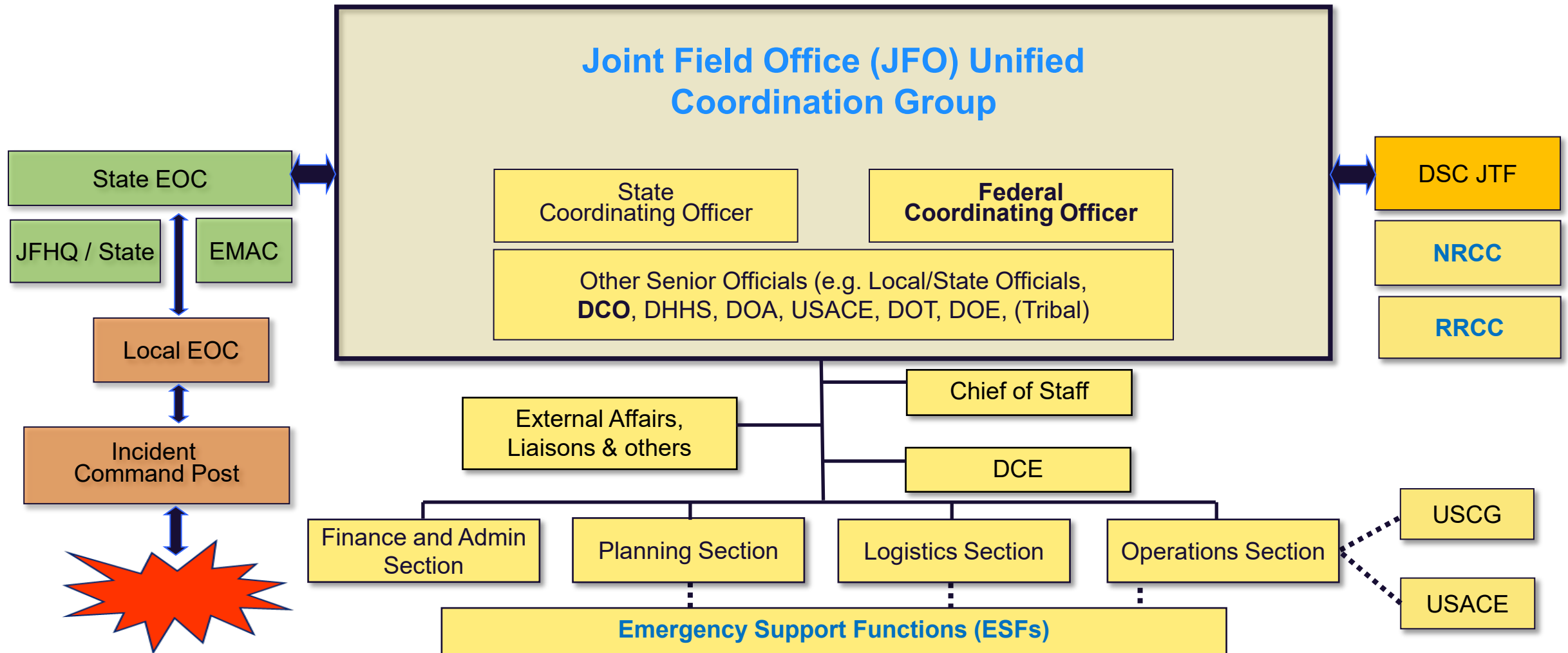
SAMEJETC.ORG

f @SAMENATIONAL

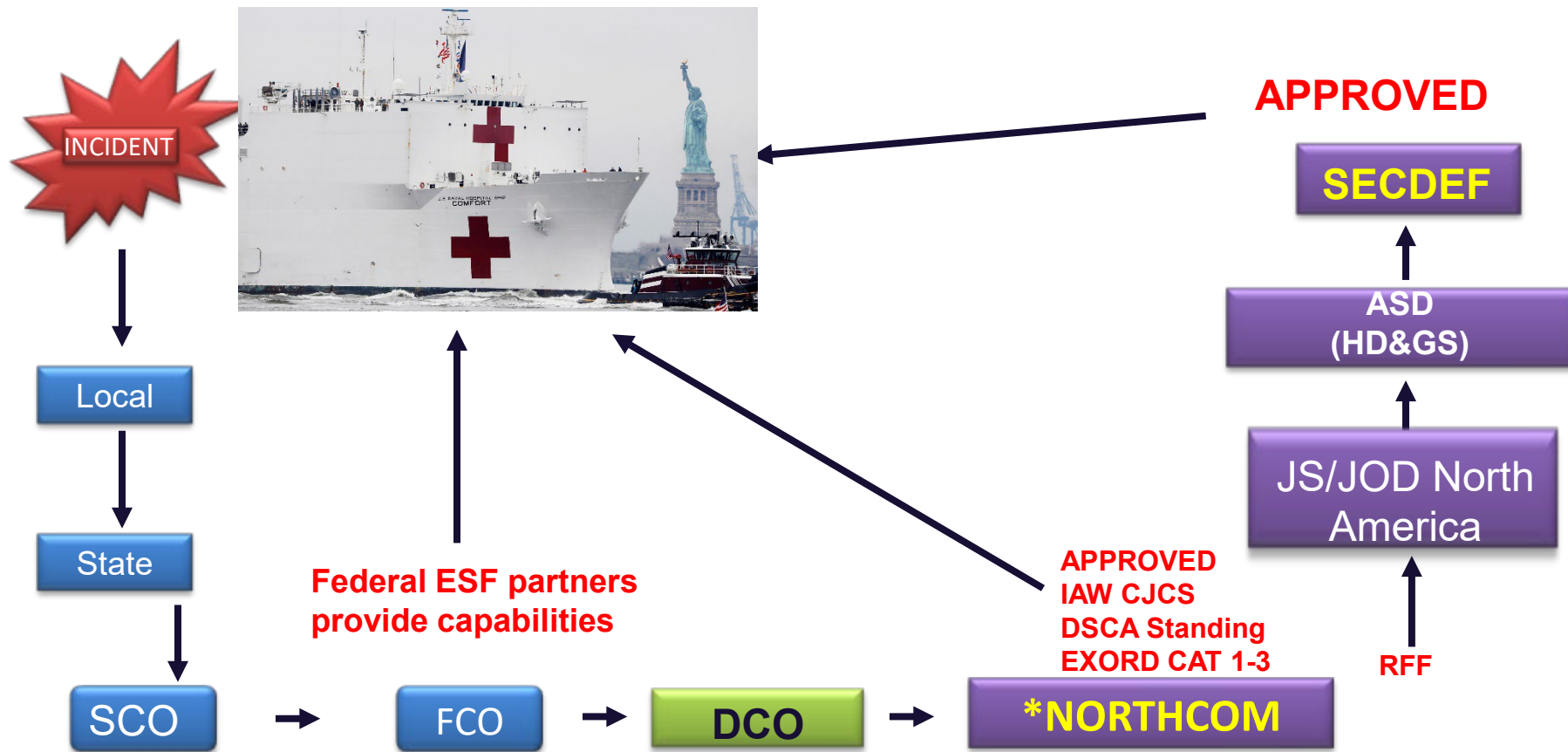
X @SAME_NATIONAL

in "SOCIETY OF AMERICAN MILITARY ENGINEERS"

Executing DSCA



DOD Mission Assignment Process



***NORTHCOM & INDOPACOM CDRs approve over 90% of Mission Assignments**



2025 JOINT ENGINEER TRAINING
CONFERENCE & EXPO IGNITING IDEAS!

MAY 13-15
Louisville, KY

SAMEJETC.ORG

f @SAMENATIONAL

X @SAME_NATIONAL

in "SOCIETY OF AMERICAN MILITARY ENGINEERS"

Examples of DSCA



Typhoon MAWAR



Maui Wildfire



2025 JOINT ENGINEER TRAINING
CONFERENCE & EXPO IGNITING IDEAS!

MAY 13-15
Louisville, KY

[SAMEJETC.ORG](https://samejetc.org)

[@SAMENATIONAL](https://www.facebook.com/SAMENATIONAL)

[@SAME_NATIONAL](https://x.com/SAME_NATIONAL)

["SOCIETY OF AMERICAN MILITARY ENGINEERS"](https://www.societyofamericanmilitaryengineers.org)

FHA

SAMEJTC.ORG

 @SAMENATIONAL

 @SAME_NATIONAL

 "SOCIETY OF AMERICAN MILITARY ENGINEERS"

What is Foreign Humanitarian Assistance (FHA)

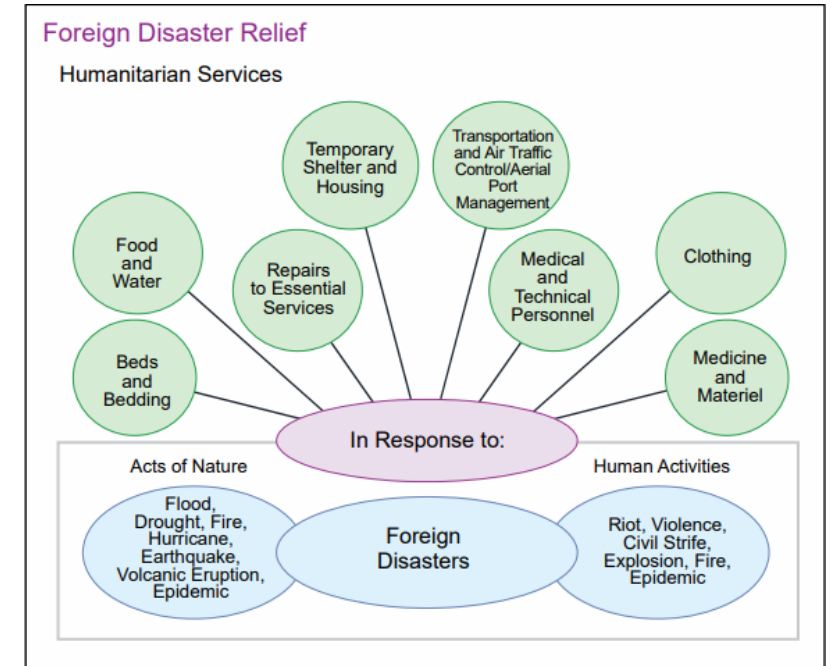
FHA consists of DOD activities conducted outside the US and its territories to directly relieve or reduce human suffering, disease, hunger, or privation. FHA is intended to supplement or complement efforts of HN civil authorities or agencies, with the primary responsibility for providing assistance. FHA includes foreign disaster relief (FDR) operations and other activities that directly address a humanitarian need and may also be conducted concurrently with other DOD support missions and activities such as dislocated civilian support; security operations; and international chemical, biological, radiological, and nuclear response (ICBRN-R).

FHA operations (including FDR operations) are normally conducted in support of USAID or DOS to provide assistance when the need for relief is gravely urgent and when the humanitarian emergency dwarfs the ability of the HN and civilian relief agencies to respond effectively.



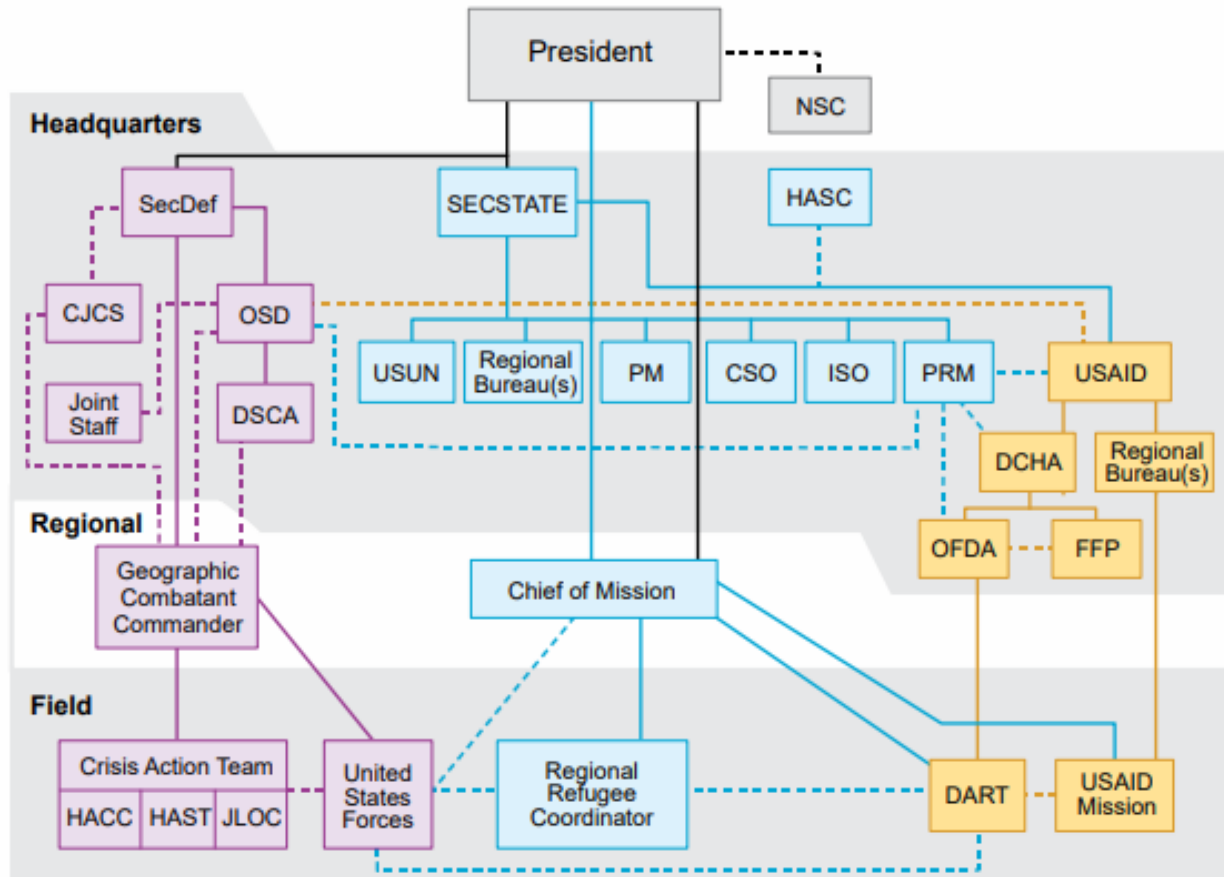
FHA Missions

- Foreign Disaster Relief
- Dislocated Civilian Support Missions
- Security Missions
- Technical Assistance and Support Functions

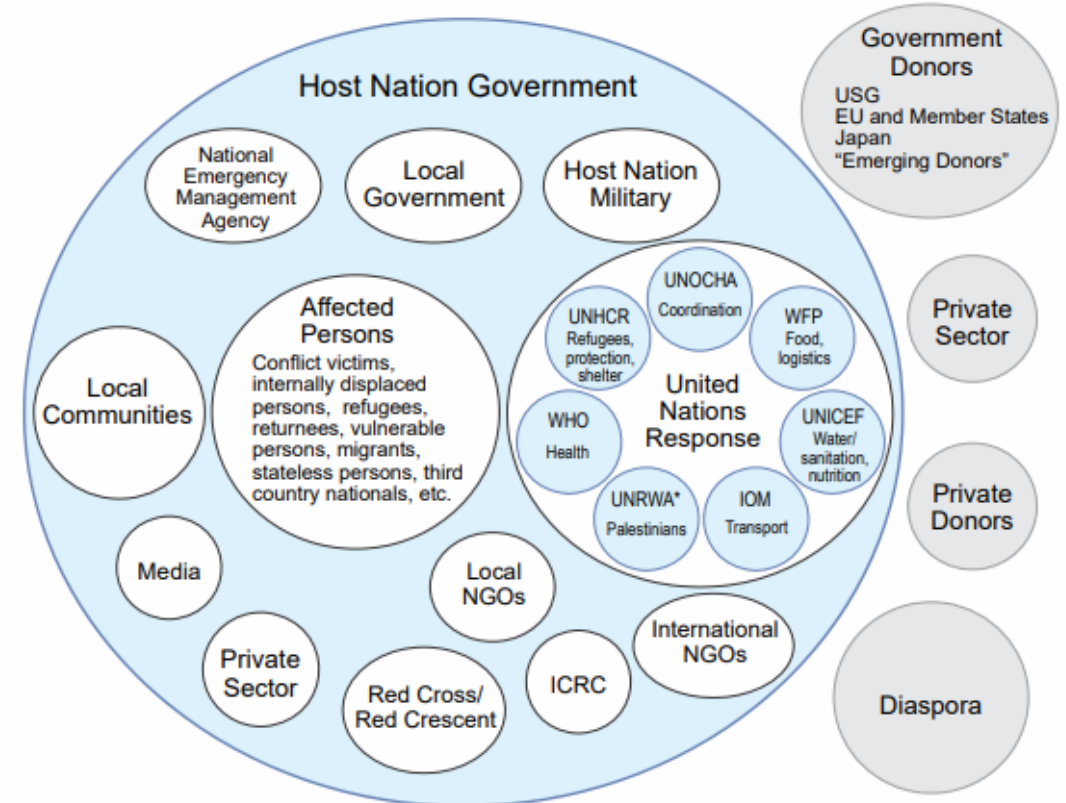


Executing FHA

Interagency Coordination for Foreign Disaster Relief



Examples of Humanitarian Assistance Stakeholders



* Present in the Middle East



2025 JOINT ENGINEER TRAINING
CONFERENCE & EXPO
IGNITING IDEAS!

MAY 13-15
Louisville, KY

SAMEJETC.ORG

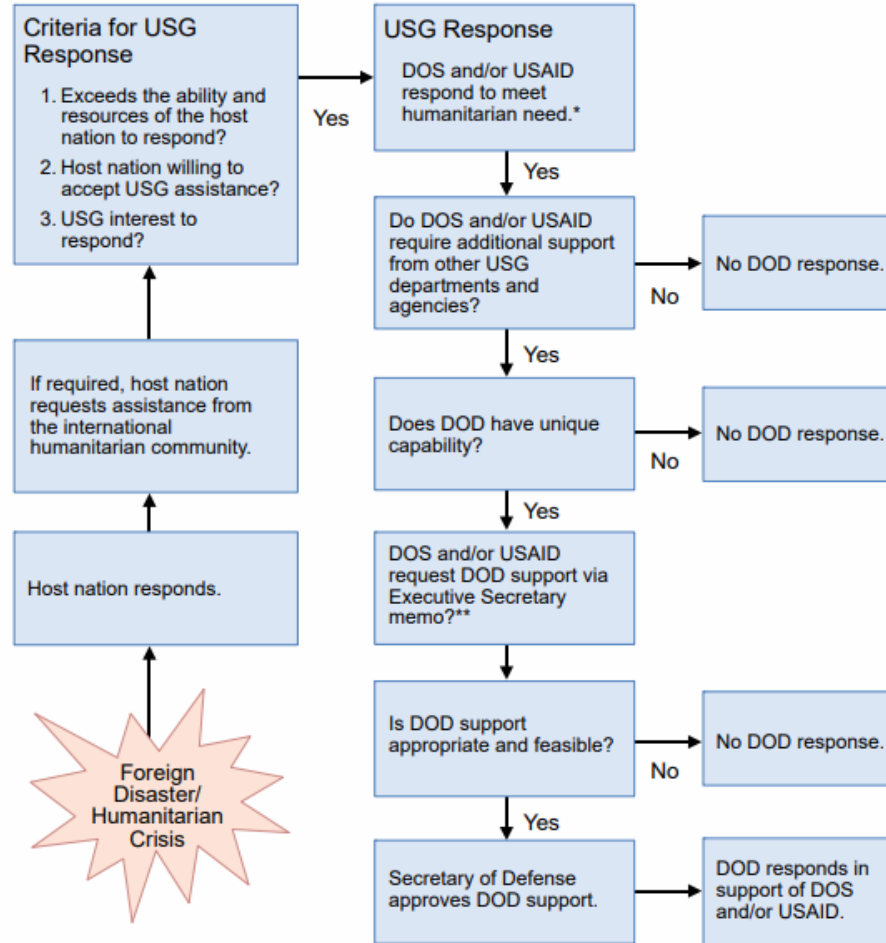
@SAMENATIONAL

@SAME_NATIONAL

"SOCIETY OF AMERICAN MILITARY ENGINEERS"

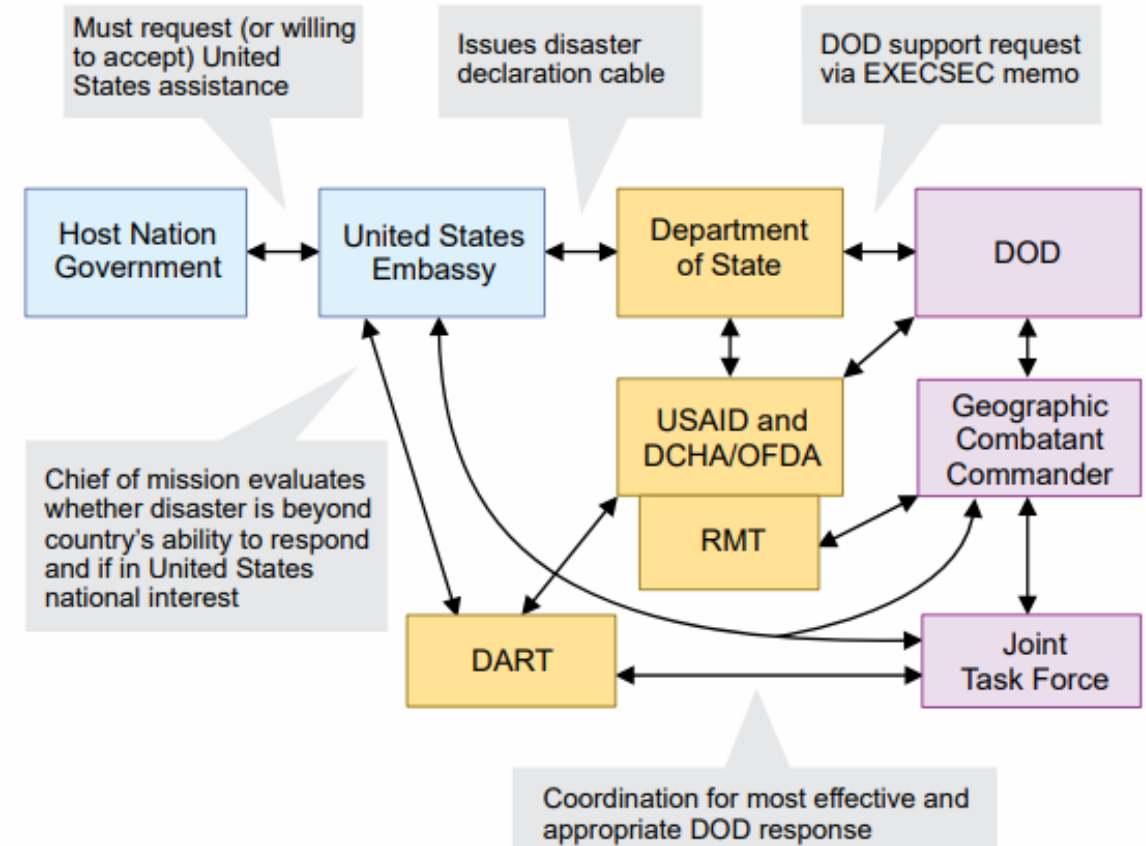
Executing FHA

Requesting Department of Defense Support



Interagency Coordination Flow

(When DCHA/OFDA and DOD Respond)



2025 JOINT ENGINEER TRAINING
CONFERENCE & EXPO
IGNITING IDEAS!

MAY 13-15
Louisville, KY

SAMEJETC.ORG

@SAMENATIONAL

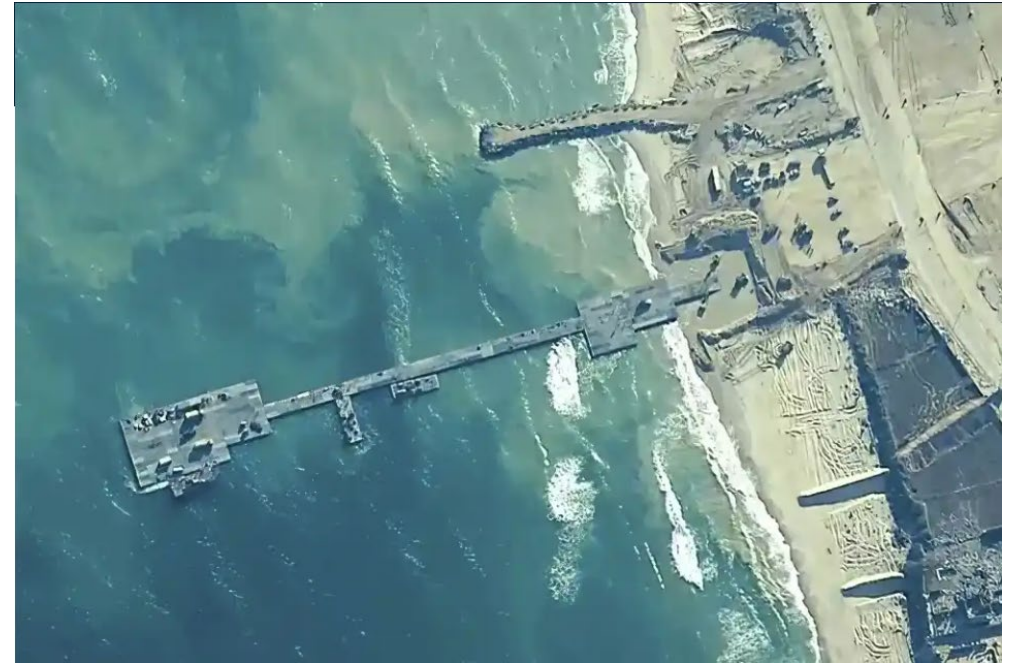
@SAME_NATIONAL

"SOCIETY OF AMERICAN MILITARY ENGINEERS"

Examples of FHA



Ebola Response



Gaza JLOTS



2025 JOINT ENGINEER TRAINING
CONFERENCE & EXPO IGNITING IDEAS!

MAY 13-15
Louisville, KY

SAMEJETC.ORG

[@SAMENATIONAL](https://www.facebook.com/SAMENATIONAL)

[@SAME_NATIONAL](https://twitter.com/SAME_NATIONAL)

["SOCIETY OF AMERICAN MILITARY ENGINEERS"](https://www.societyofamericanmilitaryengineers.org/)

TTX SCENARIO

SAMEJTC.ORG

 @SAMENATIONAL

 @SAME_NATIONAL

 "SOCIETY OF AMERICAN MILITARY ENGINEERS"

Regional Tsunami



2025 JOINT
ENGINEER
TRAINING
CONFERENCE
& EXPO

IGNITING IDEAS!

MAY 13-15
Louisville, KY

samejetc.org

SAME

- 1 day ago Kermadec-Tonga Subduction Zone had minor subsidence causing a major regional tsunami
- American Samoa & Samoa took direct impact
- Widespread power outages
- Both islands are requesting U.S. assistance



SAMEJetc.ORG

f @SAMENATIONAL

X @SAME_NATIONAL

in "SOCIETY OF AMERICAN MILITARY ENGINEERS"

Where Are We?



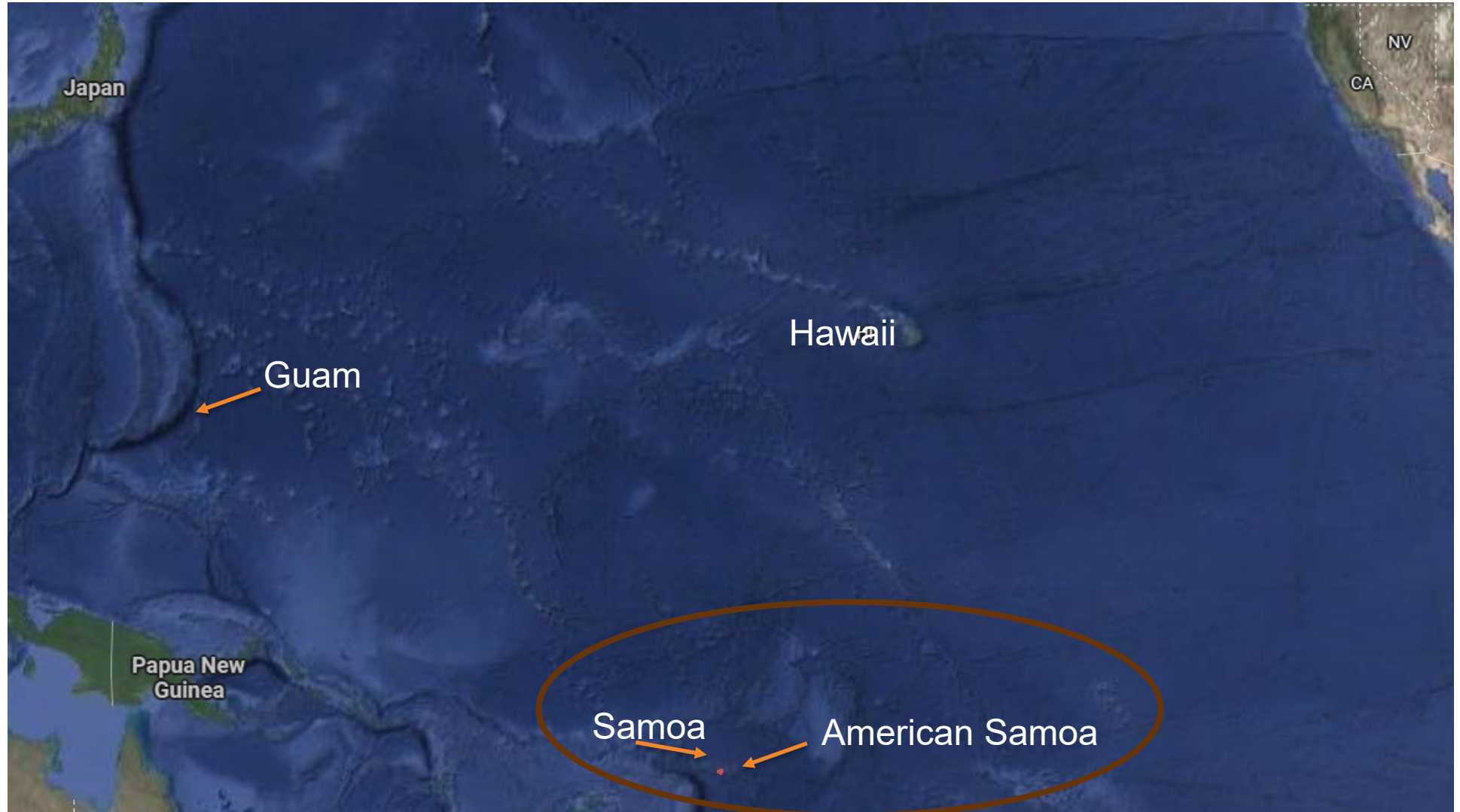
2025 JOINT
ENGINEER
TRAINING
CONFERENCE
& EXPO

IGNITING IDEAS!

MAY 13-15
Louisville, KY

samejetc.org

SAME



SAMEJetc.ORG

f @SAMENATIONAL

X @SAME_NATIONAL

in "SOCIETY OF AMERICAN MILITARY ENGINEERS"

Samoa & American Samoa



2025
JOINT
ENGINEER
TRAINING
CONFERENCE
& EXPO

IGNITING IDEAS!

MAY 13-15
Louisville, KY

samejetc.org



SAME

[SAMEJetc.ORG](https://samejetc.org)

 [@SAMENATIONAL](https://www.facebook.com/SAMENATIONAL)

 [@SAME_NATIONAL](https://twitter.com/SAME_NATIONAL)

 ["SOCIETY OF AMERICAN MILITARY ENGINEERS"](https://www.linkedin.com/company/society-of-american-military-engineers)



20 JOINT
25 ENGINEER
TRAINING
CONFERENCE
& EXPO

IGNITING IDEAS!

MAY 13-15
Louisville, KY

samejetc.org



AMERICAN SAMOA

Facilitators

Capt Brett Betit, USAF, CE School AFIT

LT Chris Bishop, USN, NMCB 5

MAJ Victor Nelson, USA, 411 EN BDE

SAMEJetc.ORG

 @SAMENATIONAL

 @SAME_NATIONAL

 "SOCIETY OF AMERICAN MILITARY ENGINEERS"

Main Island of Tutuila



2025 JOINT ENGINEER TRAINING
CONFERENCE & EXPO
IGNITING IDEAS!

MAY 13-15
Louisville, KY

SAMEJETC.ORG

[@SAMENATIONAL](https://www.facebook.com/SAMENATIONAL)

[@SAME_NATIONAL](https://twitter.com/SAME_NATIONAL)

["SOCIETY OF AMERICAN MILITARY ENGINEERS"](https://www.societyofamericanmilitaryengineers.org/)

Island Overview

- Population: 55,000 located mainly on Tutuila Island.
- Does have an international airport and deep-water seaport.
- Limited electrical power infrastructure relying mainly on diesel powered generators.
- Drinking water primarily comes from ground water and rainwater collection.
 - Water storage is a concern. The island is vulnerable to droughts.
 - Desalinization plant is on the main island but doesn't have capacity to produce enough water for the island and has major operational reliability concerns due to reliance on diesel generators for power and maintenance issues.
- Food is primarily imported to the island with some local agriculture to supplement.
- Medical center on Tutuila has 150 bed capacity.



Situation: Regional Tsunami

- American Samoa took a direct impact
- Widespread power outages reported
- American Samoa requesting Federal assistance





20 JOINT
25 ENGINEER
TRAINING
CONFERENCE
& EXPO

IGNITING IDEAS!

MAY 13-15
Louisville, KY



samejetc.org

SAMOA

Facilitators:

LT Dylan Elkins,

Plans and Strategies Officer, NCG 1

MAJ Spencer Diamond,

Executive Officer 3-409th BSB, 4th CAV (MFTB)

SAMEJetc.ORG




 @SAMENATIONAL

 @SAME_NATIONAL

 "SOCIETY OF AMERICAN MILITARY ENGINEERS"

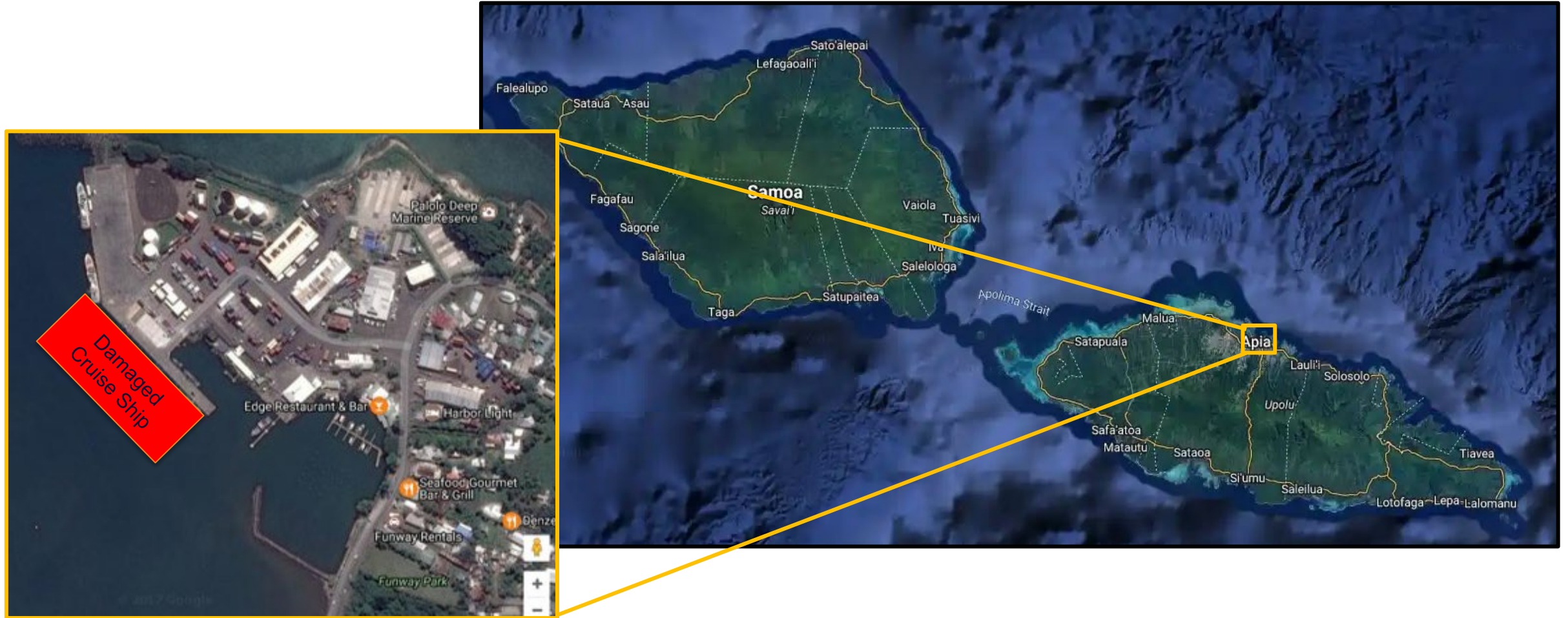
Samoa overview



Map Key	
Symbol	Description
	Port
	Airfield
	Main Road

Foreign Humanitarian Assistance

Damage overview



2025 JOINT ENGINEER TRAINING
CONFERENCE & EXPO IGNITING IDEAS!

MAY 13-15
Louisville, KY

SAMEJETC.ORG

[@SAMENATIONAL](https://www.facebook.com/SAMENATIONAL)

[@SAME_NATIONAL](https://twitter.com/SAME_NATIONAL)

["SOCIETY OF AMERICAN MILITARY ENGINEERS"](https://www.societyofamericanmilitaryengineers.org/)

Critical Areas of Concern

- C2 structure
- Authorities
- Cruise Ship
- Island infrastructure
 - Roads, Power, Potable Water, Waste, etc.
- Split between two islands
- Environmental
- Displaced Persons
 - Sustenance, medical treatment, berthing, etc.





2025 JOINT ENGINEER TRAINING
CONFERENCE & EXPO

IGNITING IDEAS!

MAY 13-15
Louisville, KY

Q&A

[SAMEJTC.ORG](https://samejtc.org)

 [@SAMENATIONAL](https://www.facebook.com/SAMENATIONAL)

 [@SAME_NATIONAL](https://twitter.com/SAME_NATIONAL)

 ["SOCIETY OF AMERICAN MILITARY ENGINEERS"](https://www.linkedin.com/company/society-of-american-military-engineers)



2025 JOINT
ENGINEER
TRAINING
CONFERENCE
& EXPO

IGNITING IDEAS!

MAY 13-15
Louisville, KY

samejetc.org



THANK YOU

 conferences i/o



or browse to
jetc.cnf.io

Please take a few minutes to complete a short survey about this session. Your feedback will help us improve future programming for JETC.

SAMEJetc.ORG

 @SAMENATIONAL

 @SAME_NATIONAL

 "SOCIETY OF AMERICAN MILITARY ENGINEERS"